

PROMOTED BY



Promoted for and behalf of Cycling Time Trials under its Rules, Regulations and Conditions

94 1930-2024 TH

veloviewer

MONSAL HILL CLIMB

MONSAL HEAD, GREAT LONGSTONE, DERBYSHIRE

11:00AM SUNDAY 6TH OCTOBER



©My Event Pix.

RIDER MANUAL

SUPPORTED BY





Dear Riders,

Many thanks for supporting the 94th VeloViewer Monsal Hill Climb. Without you, we have no event, so a big thanks from me for entering our event this year. We continue with our headline partner this year, VeloViewer. Subscribing to VeloViewer provides new insights, engaging visualisations, motivational goals and in-depth analysis to your Strava data, so check them out online and support those who support us.

I would also like to thank new partners, True North Cycle Hub, Midpack Art and Peak Tri Store for supporting this year's event, also long time partners, Skyhook Coaching, Simon Warren from 100 Climbs, Blue Strawberry Elephant, St John Ambulance, Chatsworth Estates Derbyshire Dales District Council, Litton & Cressbrook Parish Council, Keith Adamson and Little Longstone Village Group, Derbyshire Police, Monsal Head Hotel and Hobb's Cafe. Without their help, this event just simply wouldn't happen.

As always we have live commentary from Vin Cox and Rapid Rich Stoodley. Marshals and helpers will be Sheffrec members, friends and family.

Please carefully read this manual as I have worked hard over the past 15 years to make sure that we come and go in a way that doesn't upset the local residents and that we all respect the area. We want to ensure that we can continue promoting this amazing end of season event in the heart of the beautiful Peak District National Park for many years to come.

Marc Etches
Event Organiser.

Event Schedule

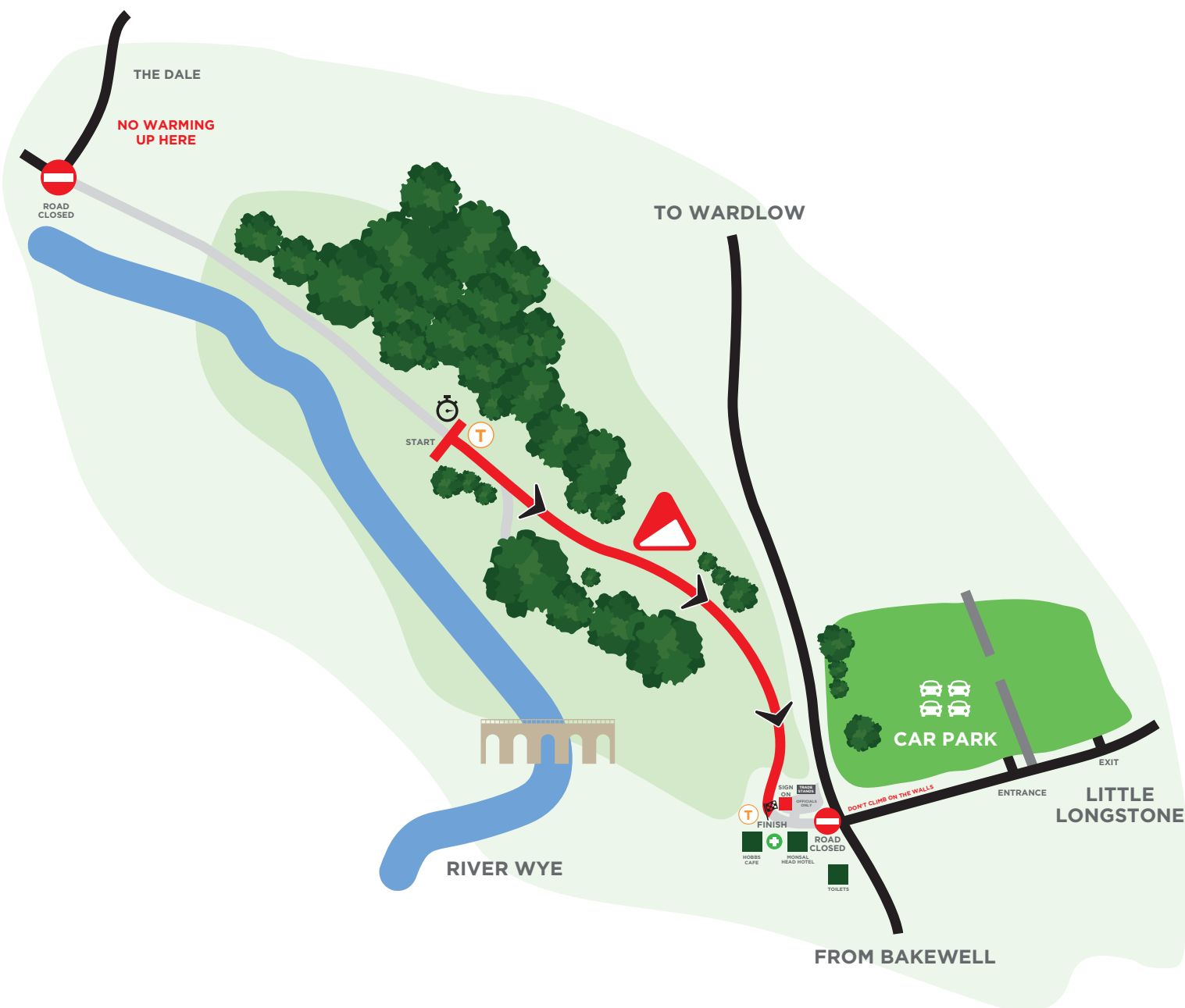
09:00	Car park opens
09:30	Road closure of Monsal Head commences
09:30	Signing on opens
09:45	Course warm up opens
10:45	Course warm up closes
10:50	Live commentary commences
11:01	First rider starts
14:05	Last rider starts
14:30	Prize presentations
15:30	Monsal Head re-opens
16:30	Car park closes

Event Map

The event is situated at Monsal Head, Great Longstone, Nr Bakewell, Derbyshire.

Please use the postcode **DE45 1NN**

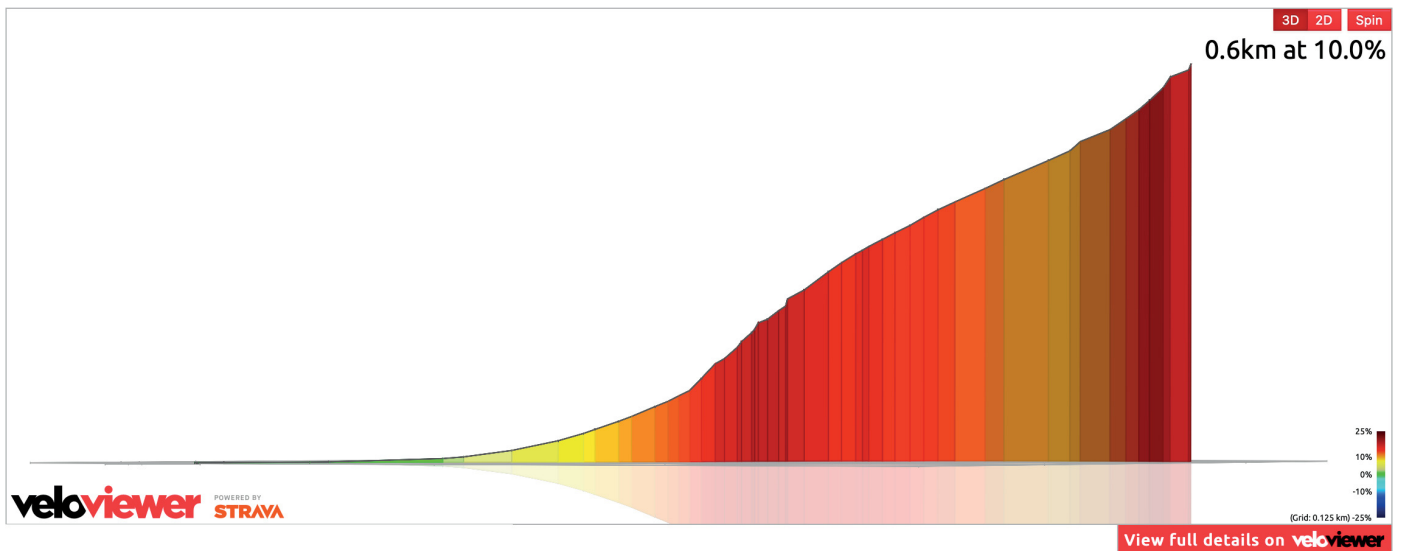
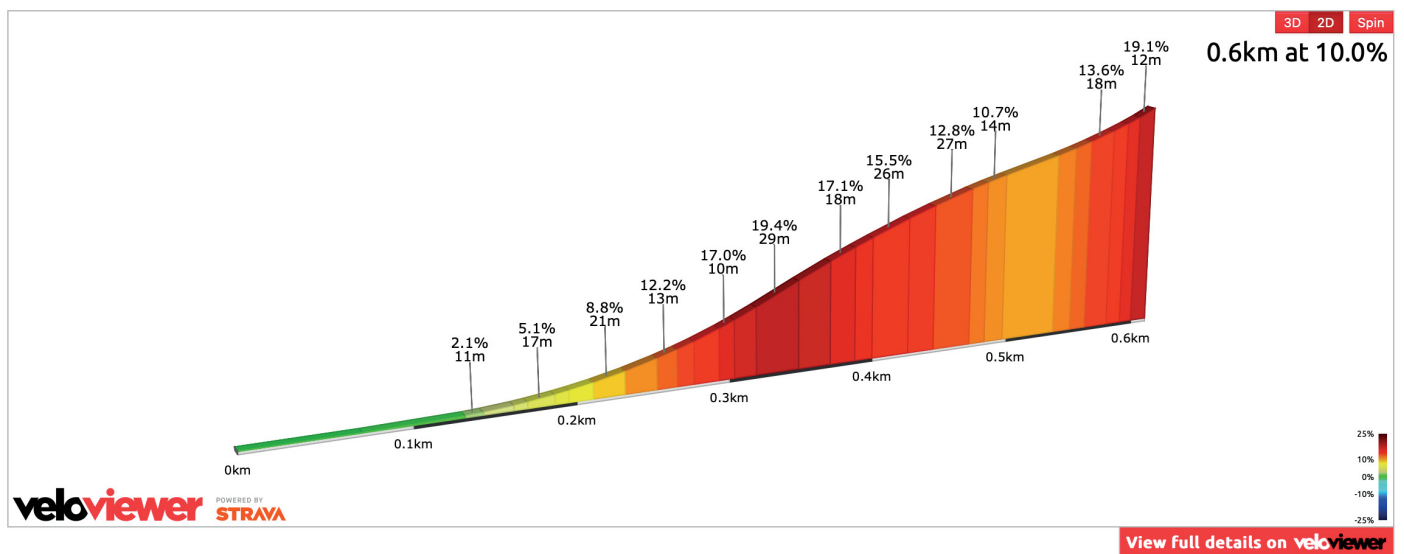
what3words: **///topic.cheater.fussy**



The Climb

Monsal hill climb is 675 yards/600m with a gradient of 1 in 6, suitable for fixed gear.

Some describe the climb as a sprinters climb. The start is pretty much flat for the first 150 yards but soon starts to climb once you pass the drive way on your right. All then goes quiet for while until you can hear the roar of the crowd. Once you pass the road sign on your left the lactic kicks in and from there till the end is a non stop effort to the line which is right outside the Monsal Head Hotel and Hobbs Café.



Event Directions. HQ – Monsal Head

The event is situated at Monsal Head, Great Longstone, Nr Bakewell, Derbyshire. Follow the A6 from Bakewell towards Buxton, turn right at Ashford in the Water onto the A6020, proceed 200 yards and turn left onto the B6465. Turn first right in Ashford and proceed for approx 3 miles towards Little Longstone / Wardlow.

Sat Nav users please use the postcode DE45 1NN. what3words: ///topic.cheater.fussy

Parking

In order to keep traffic flowing on the day, all competitors and spectators are encouraged to park in the field just outside Little Longstone. This will be clearly signed posted. There is a charge of just £2.00 and it is cash only. All funds raised will be donated to the Little Longstone Parish Church. Over the years we have raised thousands of pounds and this really does help us maintain a good relationship with the local residents. Once parked, please leave via the gate you entered and don't climb over any of the stone walls as they are very fragile.

The car park at the top of Monsal Head is only available for officials and traders. Access will only be granted via an official pass.

Please don't park on the main road from Ashford to Wardlow as that is the diversion route and we would like to keep this as clear as possible during the event.

Signing On

Signing on opens at 9:30am and is situated at the top of the climb. All riders must sign on, collect a body number, arm number and pins. Please allow enough time to arrive, park and walk up to sign on. We don't close signing on so it's up to individual riders to allow enough time before their run. All under 18's must bring a completed Parental Consent Form with them. Link here to download:

<http://www.monsalhillclimb.com/wp-content/uploads/2018/08/Monsal-Parental-Consent-Form.pdf>

There will be copies available at signing on if needed.

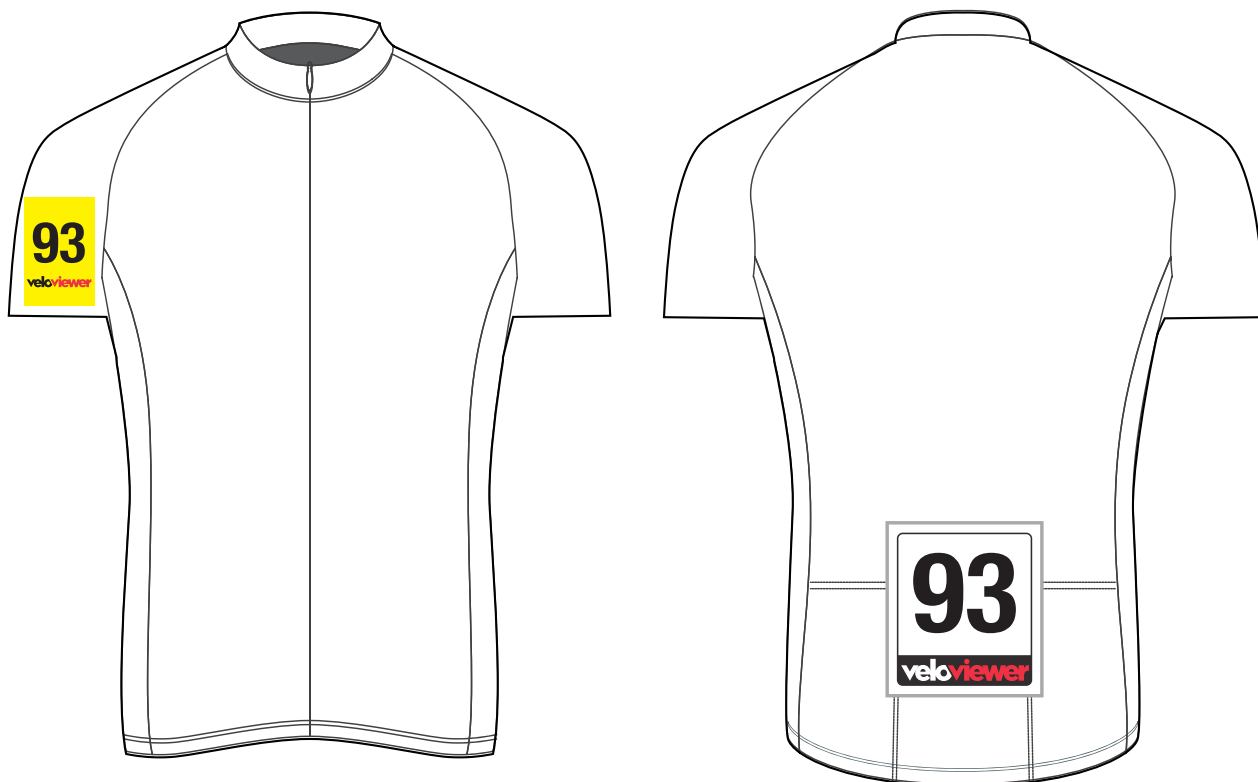
Signing Out

All riders must sign out after their run. This is a strict CTT rule. **Any riders that fail to sign out will be disqualified from the event.** This event could be subject to a random UK Anti Doping test.



Race numbers

You will be issued with 2 non-returnable race numbers. One is for the rear of your jersey and one is for your right hand upper arm, as shown in the diagram below:

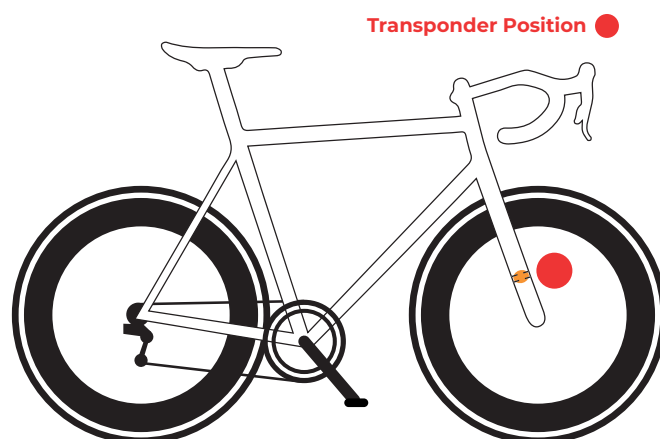


NEW for 2024 - Transponders

A transponder chip will be issued to each competitor. The transponder must be fitted to the right front fork of the bicycle using the zip ties provided as shown in the diagram.

Transponders MUST be returned at the end of the event to signing on

Un-returned transponders will be charged to the competitors concerned at a cost of £100 per transponder.



Rider Safety

CTT regulations state that hard shell helmets are now compulsory for everyone, so please wear one at all times. Working front and rear lights are also compulsory for all riders. Please make sure that you have one on your bike before you start. The timekeepers will decline you at the start if you don't have a helmet and two working lights.

At the top of the climb, we will have a team of catchers to ensure that you finish your run safely.

Often riders do collapse once over the finish line and the one before you may be laid in your path, so please take instructions from them at the top of the climb. They are there to make sure that the whole area is safe for you finish and recover from your heroic effort.

First Aid

The First Aid point will be in the Monsal Head Hotel Stables Bar. This is behind Hobbs Café, opposite signing on. Our Medical team will be on site from 10:30am until the conclusion of the event. The nearest hospitals are in Sheffield (Northern General Hospital) or Chesterfield (Chesterfield Royal Hospital).

Getting to the Start Line

We allow riders to descend down Monsal Head to the start. This is managed by marshals so please await their instructions when heading to the start. Once you have been given permission to drop down the climb, please be aware that after the closed barrier section, spectators will be on the course watching riders coming up the climb, potentially with their back to you so please keep your speed to a minimum and if you do see another rider coming up the climb, please pull to one side and if needed stop to allow them a clear run. The road is closed to traffic but if you do see a car on the route, it will have been given permission for access. There is a private house and a fishing club car park on route which we need to allow access to during the event. For the duration of the event, the road will allow access for emergency vehicles. Please do not cross the start line once you are the bottom of the climb or make any U turns in sight of the start. If you leave any clothing at the start it will be returned to signing on at the end of the event. Please remember to collect before you head home.

Your Start Time

All riders are allocated a time slot which corresponds with your race number and timing chip. All riders start at 1 minute intervals and should be at the start in plenty of time to line up in order. At 30 seconds, you'll be called to the start line and held by our team of helpers. You'll receive a countdown before you are allowed to start. If for any reason you miss your start time, you will receive a time penalty. If there is a start time free, the timekeepers will allow you to start late with the penalty applied to your overall time. **It is your responsibility to be at the start on time.**

Warming Up

Most riders use rollers and turbo trainers but you can warm up on roads around the area. Please don't warm up on the diversion route of Haydale as we want to try and keep this free for local traffic to travel towards Cressbrook. The climb will be closed from 9:30am and will be open to use for warming up from 9:45am and course familiarisation until 10:45am. Please do not warm up on the course once the event starts at 11:01am.

Refreshments

There will be hot drinks and food available from the Monsal Head Hotel and Hobb's Cafe. Please support them.

Toilets

There are toilets on site run by the Monsal Head Community Toilets C.I.C. The toilets at Monsal Head were closed in May 2018 after a review by the local council. Two local councillors have worked with the District and local Parish Councils to re-open them and will eventually own them with a Community Asset Transfer. These are situated just behind the Monsal Head Hotel. The toilets run solely on donations, so if you do use them, please make a donation to help keep these running all year round. The event will make a donation but we would really appreciate if you could drop a donation in one of the boxes which are outside both entrances.

Results

Times will be posted at the signing on area on boards. We will be using ResultSheet showing live results on the day. A QR code will be available to scan and view on race day.

We will publish provisional results on the event website as soon as possible after the event and submit to CTT a few days after. If you have any queries, please let us know asap.

Prize Presentations

There will be a prize presentation around 25 minutes after the last rider has finished their run at the top of the climb. The top 3 in all categories will be called forward and presented with their prize in line with the published prize list. If you think you are in the top 3, please stay for the presentation. Spot prize vouchers will be sent out via post after the event.

If you miss your prize presentation, we'll contact you after the event to arrange collection.

Trophies

All trophies are to be kept for 12 months and must be returned after this period. We are happy for you to engrave them. If you do arrange to engrave them, save your receipt and we will gladly re-inburse you.

Event Photography

Our official event photographer is My Event Pix. A full gallery will be available here after the event:

<https://www.myeventpix.co.uk/monsal-2024>

Prize Money

All prize money will be paid via BACS. We will send a Google Form link requesting bank details a few days after the event. If all riders can fill in the form asap, that would be great as we like to transfer all funds in one go. The email will be sent to the address submitted on entry.

Prize List

Overall - Dick Aldridge Memorial Trophy

1st	£200.00 + 100 Climbs 3D Model of Monsal
2nd	£100.00
3rd	£80.00
4th	£70.00
5th	£60.00
6th	£50.00
7th	£40.00
8th	£30.00
9th	£20.00
10th	£15.00

Female Overall - HMT Cup

1st	£200.00 + 100 Climbs 3D Model of Monsal
2nd	£100.00
3rd	£80.00
4th	£70.00
5th	£60.00
6th	£50.00
7th	£40.00
8th	£30.00
9th	£20.00
10th	£15.00

Fastest Team of 3 - Doug Bond Cup

£10.00 + 1 pair of 100 Climbs Socks each

Spot Prizes

30th, 40th, 50th, 60th, 80th, 100th, 120th & 140th

5 x Peak Tri Store Vouchers (40th, 60th, 80th, 120th & 140th)

3 x True North Cycle Hub S1 Cycle Service (30th, 50th & 100th)

Lanterne Rouge - Last Placed Rider

Light Set from Peak Tri Store



Open Veteran (40-49) - Cope Trophy

1st £40.00 - 2nd £25.00 - 3rd £15.00

Open Veteran V50+ (50+) - Cliff Newell Tankard

1st £40.00 - 2nd £25.00 - 3rd £15.00

Female Veteran (40+)

1st £40.00 - 2nd £25.00 - 3rd £15.00

Open Junior (16-18) - Weston Park Trophy - Supported Peak Tri Store

1st £40.00 + Peak Tri Store Goodie Bag

2nd £25.00 + Peak Tri Store Goodie Bag

3rd £15.00 + Peak Tri Store Goodie Bag

Female Junior (16-18) - Skyhook Coaching Trophy - Supported Peak Tri Store

1st £40.00 + Peak Tri Store Goodie Bag

Open Youth (Under 16) - Nightingale Trophy - Supported by True North Cycle Hub

1st £40.00 + True North Cycle Hub Goodie Bag

2nd £25.00 + True North Cycle Hub Goodie Bag

3rd £15.00 + True North Cycle Hub Goodie Bag

Female Youth (Under 16) - Yondermann Cafe Trophy - Supported by True North Cycle Hub

1st £40.00 + True North Cycle Hub Goodie Bag

2nd £25.00 + True North Cycle Hub Goodie Bag

3rd £15.00 + True North Cycle Hub Goodie Bag

Most Distressed Finisher

Zwift Steering Wheel donated by True North Cycle Hub

Total Cash Prize Fund = £1880.00

Rider List & Start Times

No.	Start	Name	Club/Team	Class	Category
1	11:01	Edward Gospel	Barnesbury CC	Open	Youth
2	11:02	Mieke Van Schelven	Sheffrec CC	Female	Youth
3	11:03	Harry Astles	Matlock CC	Open	Youth
4	11:04	Wesley Van Schelven	Sheffrec CC	Open	Youth
5	11:05	Yvonne Twelvetree	Sheffield Triathlon Club	Female	Veteran
6	11:06	Owen Smart	myhillcycling.co.uk	Open	Youth
7	11:07	Thomas Hutchison	University of Nottingham C C	Open	Espoir
8	11:08	Richard Knowles	Stafford RC	Open	Veteran 50+
9	11:09	Bobby Cooper	Ilkeston Cycle Club	Open	Youth
10	11:10	Alfie Astles	Matlock CC	Open	Youth
11	11:11	Kevin Raine	myhillcycling.co.uk	Open	Veteran 50+
12	11:12	George Anthony	Matlock CC	Open	Youth
13	11:13	Isla Bestwick	ESV Manchester	Female	Youth
14	11:14	Lukas Barton	Sheffield Youth Cycling Club	Open	Youth
15	11:15	Finn Miller	Matlock CC	Open	Youth
16	11:16	Harriet Eisner	Sheffield Triathlon Club	Female	Veteran
17	11:17	Simon Joiner	myhillcycling.co.uk	Open	Veteran 50+
18	11:18	Cody Bassett	Derby Mercury R C	Open	Youth
19	11:19	Pete Clements	Elmsall Road Club	Open	Veteran 50+
20	11:20	Frederick Farr	Matlock CC	Open	Youth
21	11:21	Jasper Mumby	Sheffield Youth Cycling Club	Open	Youth
22	11:22	Khaled Balabil	Holmes Chapel Velo	Open	Veteran 50+
23	11:23	Catherine Turan	Sheffrec CC	Female	Veteran
24	11:24	George Robb	Bedfordshire Road CC	Open	Youth
25	11:25	Alex Whitmore	Ratae RC	Open	Senior
26	11:26	George Daly	Sitwell Cycling Club	Open	Senior
27	11:27	Mat Ivings	Buxton CC/Sett Valley Cycles	Open	Veteran 50+
28	11:28	Nick Burton	Newark Castle C C	Open	Veteran
29	11:29	Heidi Roscoe	CTW Racing	Female	Youth
30	11:30	Samuel Deacon	University of Sheffield Cycling Club	Open	Espoir
31	11:31	Benjamin Rawsthorne	Waldy Wheelers	Open	Espoir
32	11:32	Neale Jackson	Sheffrec CC	Open	Veteran
33	11:33	Michael Sprot	Sheffield Triathlon Club	Open	Veteran
34	11:34	Brendan Hirst	Rugby Racing Cycling Club	Open	Veteran 50+
35	11:35	Paolo Coppo	Audax UK	Open	Veteran 50+
36	11:36	Harry Buxton	Royal Leamington Spa Cycling Club	Open	Senior
37	11:37	Kieron Salt	myhillcycling.co.uk	Open	Veteran 50+
38	11:38	Kamila Leska	Welland Valley CC	Female	Veteran
39	11:39	James Vanieris	Racing Club Ravenna	Open	Senior
40	11:40	Jonathan Pupius	7 Hills Cycling Club	Open	Veteran
41	11:41	James Westwood	SUMMAT CC	Open	Senior
42	11:42	Robert Copeland	Sheffrec CC	Open	Veteran
43	11:43	Paul Faulkner	Common Lane Occasionals	Open	Veteran 50+
44	11:44	Elliot English	Sheffield Youth Cycling Club	Open	Junior
45	11:45	Phillip Evans	Beeston Cycling Club	Open	Senior
46	11:46	TracyHughes	Barnsley Road Club	Female	Veteran
47	11:47	Josh Stringfellow	Bolsover and District CC	Open	Senior
48	11:48	Seb Frost	MULE .C.C.	Open	Veteran
49	11:49	Jack Evans	Gorilla Coffee Cycling Club	Open	Senior
50	11:50	Mark Conanughton	Fusion Cycling Club Dronfield	Open	Veteran 50+

Rider List & Start Times

No.	Start	Name	Club/Team	Class	Category
51	11:51	Dan Smith	South Normanton C C	Open	Senior
52	11:52	Joshua Heaton	SUMMAT CC	Open	Senior
53	11:53	Claire Hughes	Peddlamaniacs Cycle Club	Female	Veteran
54	11:54	Hon Max Chan	Royal Sutton CC	Open	Veteran C4
55	11:55	William Sharman	Salisbury Road and Mountain CC	Open	Junior
56	11:56	Matt Jacobs	Plomesgate CC	Open	Senior
57	11:57	Tristan Davies-Bennett	Barnsley Road Club	Open	Junior
58	11:58	Jack Talbot	Lakes Road Club	Open	Senior
59	11:59	Alice Rance	Band of Climbers Cycling Club	Female	Senior
60	12:00	Luke Dabbs	Rossendale RC	Open	Senior
61	12:01	Sam Witter	Congleton CC - MyWindsock	Open	Senior
62	12:02	Ryan Clarke	Ilkeston Cycle Club	Open	Senior
63	12:03	Alec Dovinson	Mansfield Road Club	Open	Senior
64	12:04	Stuart Bolton	Sheffrec CC	Open	Veteran 50+
65	12:05	Kieron Wharton	Eat Plants Not Pigs CC	Open	Senior
66	12:06	Niall Read	South Normanton C C	Open	Senior
67	12:07	Alastair Merrill	VC 10	Open	Veteran 50+
68	12:08	Dean Johnston	Farnham RC	Open	Senior
69	12:09	Paul Kippax	Rutland Cycling Club	Open	Veteran 50+
70	12:10	Isabella Ash	Tactic UK WRT	Female	Senior
71	12:11	Noah Roscoe	CTW Racing	Open	Youth
72	12:12	Sam Village	SUMMAT CC	Open	Senior
73	12:13	John Hind	Bolsover and District CC	Open	Veteran 50+
74	12:14	Jack Sutton	University of Sheffield Cycling Club	Open	Junior
75	12:15	Lydia Turan	Sheffrec CC	Female	Junior
76	12:16	Noah Inman	Mansfield Road Club	Open	Junior
77	12:17	Ashley Steventon	Royal Air Force Cycling Association	Open	Senior
78	12:18	Chris Smart	Barnsley Road Club	Open	Veteran
79	12:19	Joshua Davis	Band of Climbers Cycling Club	Open	Senior
80	12:20	Tim Melville	Stone Wheelers CC	Open	Veteran
81	12:21	Kirstin Hamilton	Plomesgate CC	Female	Senior
82	12:22	Dan Letherbarrow	Cheltenham & County Cycling Club	Open	Senior
83	12:23	Philip Wake	Derwent Valley Cycling Club	Open	Veteran
84	12:24	Daniel Farrand	myhillcycling.co.uk	Open	Veteran
85	12:25	Louie Trezise	Macclesfield Wheelers	Open	Espoir
86	12:26	James Rees	Audax UK	Open	Veteran
87	12:27	Brian Hygate	Fareham Wheelers CC	Open	Veteran 50+
88	12:28	Joe Thorp	Macclesfield Wheelers	Open	Espoir
89	12:29	Matthew Warrilow	Band of Climbers Cycling Club	Open	Veteran
90	12:30	Gavin Alcock	7 Hills Cycling Club	Open	Veteran
91	12:31	Thomas Bowers	Macclesfield Wheelers	Open	Senior
92	12:32	Noah Starbuck	Sleaford Wheelers Cycling Club	Open	Junior
93	12:33	Philip Coates	Leek CC - Den Engel Belgian Bar	Open	Veteran
94	12:34	Alice Larkin	High Peak Cycles RT	Female	Veteran
95	12:35	Scott Bennett	Barnsley Road Club	Open	Veteran 50+
96	12:36	Owen Cairns	Clifton CC York	Open	Junior
97	12:37	Ashley Wilcox	Congleton CC - MyWindsock	Open	Senior
98	12:38	Sean Reek	Ilkeston Cycle Club	Open	Veteran 50+
99	12:39	Louis Jacobs	Sheffield Sports Cycling Club	Open	Espoir
100	12:40	Simon Warren	Norwood Paragon CC	Open	Veteran 50+

Rider List & Start Times

No.	Start	Name	Club/Team	Class	Category
101	12:41	Scott Hamblett	Gorilla Coffee Cycling Club	Open	Senior
102	12:42	Mark Shepherd	Team Enable - M.I. Racing	Open	Veteran 50+
103	12:43	Alan Eaton	Band of Climbers Cycling Club	Open	Senior
104	12:44	Tobias Edwards	Team Lifting Gear Products	Open	Senior
105	12:45	Matt Lawton	Macclesfield Wheelers	Open	Veteran
106	12:46	Joshua Bradbury	Manchester Wheelers	Open	Youth
107	12:47	Ryan Hornsby	Lindsey Roads Cycling Club	Open	Senior
108	12:48	Henry Bruneau	University of Sheffield Cycling Club	Open	Espoir
109	12:49	Seraphina Green	360cycling	Female	Youth
110	12:50	Thomas Robb	Bedfordshire Road RT	Open	Veteran 50+
111	12:51	Ed Stubbs	3C Test Team	Open	Youth
112	12:52	Jamie Brough	Matlock CC	Open	Youth
113	12:53	Robert Curtis	7 Hills Cycling Club	Open	Senior
114	12:54	Ben Mackinson	ABR Cycle Team	Open	Senior
115	12:55	Tom Wood	Elevate RT	Open	Junior
116	12:56	James Walker	SUMMAT CC	Open	Senior
117	12:57	Dean Johns	VTTA (Yorkshire)	Open	Veteran
118	12:58	Jake Wade	Lindsey Roads Cycling Club	Open	Senior
119	12:59	Isabel Rodriguez	Royal Leamington Spa Cycling Club	Female	Senior
120	13:00	Sam Amps	Beeston Cycling Club	Open	Senior
121	13:01	Fraser Cummings	360cycling	Open	Youth
122	13:02	James Stockton	Buxton CC/Sett Valley Cycles	Open	Senior
123	13:03	Jude Alcock	Sheffield Youth Cycling Club	Open	Youth
124	13:04	Ollie Maynard	St Ives CC	Open	Espoir
125	13:05	John Bowman	Muckle Cycle Club	Open	Veteran
126	13:06	Stephen Greenway	7 Hills Cycling Club	Open	Senior
127	13:07	David Fellows	Solihull CC	Open	Senior
128	13:08	William Jones	London Dynamo	Open	Espoir
129	13:09	Felix Oliver	Sheffield Youth Cycling Club	Open	Youth
130	13:10	Jon Wild	Veloviewer	Open	Veteran 50+
131	13:11	George Bromley	Beeston Cycling Club	Open	Junior
132	13:12	Ryan Oldam	Elevate RT	Open	Senior
133	13:13	Phoebe Langlands	Matlock CC	Female	Youth
134	13:14	Joseph Walker	Velo Bavarian	Open	Senior
135	13:15	Oliver Humphreys	National Clarion CC	Open	Veteran
136	13:16	Nick Munro	Outlands	Open	Senior
137	13:17	Maia Howell	Matlock CC	Female	Junior
138	13:18	Benjamin Jordan	Team Lifting Gear Products	Open	Senior
139	13:19	Noah Zaman	myhillcycling.co.uk	Open	Junior
140	13:20	Tony Cope	MagCAD Designs	Open	Veteran 50+
141	13:21	James Ambrose-Parish	TAAP Kalas	Open	Senior
142	13:22	Helena Shapton	Brother UK - Team OnForm	Female	Senior
143	13:23	Tom Andrews	Team Lifting Gear Products	Open	Senior
144	13:24	Danny Lake	360VRT	Open	Veteran
145	13:25	Brodie Johnson	Beeston Road Club	Open	Youth
146	13:26	Erin Avill	Storey Racing	Female	Espoir
147	13:27	Scott Palmer	Aerologic RT	Open	Veteran
148	13:28	Tom Lindley	Team Sheffield	Open	Junior
149	13:29	Becky Hair	FTP (Fulfil The Potential) Race Team	Female	Senior
150	13:30	Darren Kidson	Onyx RT	Open	Veteran

Rider List & Start Times

No.	Start	Name	Club/Team	Class	Category
151	13:31	Steve Thomas	Bristol Road Club	Open	Veteran 50+
152	13:32	Charlie Openshaw	Team Lifting Gear Products	Open	Veteran 50+
153	13:33	Jacob Bradbury	Manchester Wheelers	Open	Junior
154	13:34	Robert Sansby	Leicestershire RC	Open	Senior
155	13:35	Alfie Nott	Sheffield Youth Cycling Club	Open	Youth
156	13:36	Mark Proctor	Matlock CC	Open	Senior
157	13:37	Matthew Meanwell	Velo Bavarian	Open	Senior
158	13:38	Tobi Ng	Team PB Performance	Open	Senior
159	13:39	Gemma Mitchell	Team Boompods	Female	Veteran
160	13:40	Ezra Bateman	Clifton CC York	Open	Youth
161	13:41	James Scrivener	Macclesfield Wheelers	Open	Senior
162	13:42	Steven Prince	Ludlow Brewery Race Team	Open	Veteran
163	13:43	Finley Hudson	Harrogate Nova Race Team	Open	Youth
164	13:44	Jude Taylor	Team PB Performance	Open	Senior
165	13:45	Harvey Thomas	Bristol Road Club	Open	Espoir
166	13:46	Lilja Raine	Loughborough Students Cycling Club	Female	Espoir
167	13:47	Ben Plowman	Sheffrec CC	Open	Veteran
168	13:48	Harley Widdowson	Clancy Briggs Cycling Academy	Open	Junior
169	13:49	Monica Greenwood	Macclesfield Wheelers	Female	Senior
170	13:50	Marcus Cram	Muckle Cycle Club	Open	Senior
171	13:51	Ryan Williams	Beeston Cycling Club	Open	Espoir
172	13:52	Josh Coyne	Pump & Pedal Racing	Open	Senior
173	13:53	Nicholas Latimer	Team Lifting Gear Products	Open	Veteran
174	13:54	Eluned King	University of Nottingham C C	Female	Espoir
175	13:55	Cameron Biddle	HUUB WattShop	Open	Senior
176	13:56	Marcus Cockerill	Loughborough Students Cycling Club	Open	Espoir
177	13:57	Isaac Oliver	Harrogate Nova Race Team	Open	Junior
178	13:58	Adam Kenway	Team HUUB	Open	Senior
179	13:59	Ewan Tuohy	Arctic Aircon RT	Open	Senior
180	14:00	Harry MacFarlane	TAAP Kalas	Open	Senior
181	14:01	James McKay	Saint Piran	Open	Senior
182	14:02	Rachel Galler	FTP (Fulfil The Potential) Race Team	Female	Senior
183	14:03	James Hartley	Cycling Sheffield	Open	Espoir
184	14:04	Gregg Booker	SUMMAT CC	Open	Senior
185	14:05	Andy Nichols	Team Lifting Gear Products	Open	Senior

Officials & Helpers

Event Organiser:	Marc Etches
Chief Marshal:	Bev Randell-Eyre
Signing On:	Vaness Etches & Janine Morrall
Starters:	John Tansley, Dave Staniland, Rob Copeland & Andy Cox
Catchers:	Chris Dale, Chris Lawrence, Tom Hutchison & Phil Makinson
Commentators:	Vin Cox & Rapid Rich Stoodley
First Aid:	St John Ambulance
Cark Park:	Little Longstone Parish Group
Timekeepers:	John Clarke (VTTA N Mids) Christine Minto (Birdwell Wheelers) Philip Minto (Birdwell Wheelers)
Results Clerk:	Adam Machan
Results Team:	Karl Wooffindin & Mark Rusby
Social Media:	Kian Ward
PA & Audio:	Fox Audio Hire

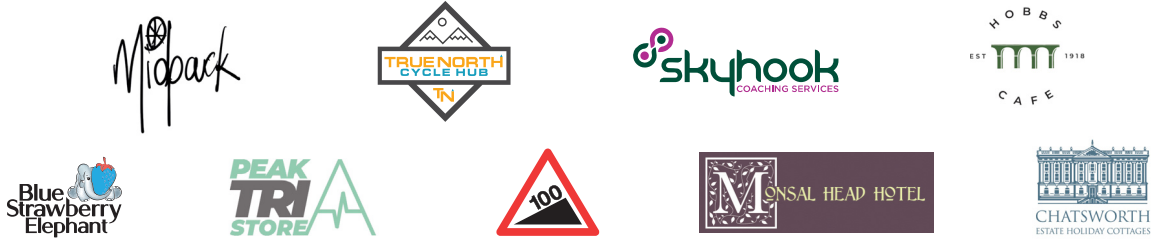
Individual Category Record Holders

Open Senior - Malcolm Elliott Rutland CC 1:14.2 (1981)
Female Senior - Bithja Jones Pankhurst Cycles 1:37.5 (2021)
Open Veteran (40-49) - Steve Tait OVB 1:25.3 (2019)
Female Veteran - Bithja Jones Pankhurst Cycles 1:37.5 (2021)
Open Veteran (50+) - Simon Froberg Dinnington Racing Club 1:41.3 (2021)
Open Junior - Robert Gray HMT Academy with JLT Condor 1:23.6 (2016)
Female Junior - Jessie Walker Matrix Fitness – Prendas 1:53.5 (2012)
Open Youth - Oliver Rees Holmfirth CC 1:30.4 (2016)
Female Youth - Lily Greenhalgh East Bradford CC 1:58.2 (2016)
Tandem - Craig Malkin & Peter Howard Worrall Wheelers 2:57.5 (2019)

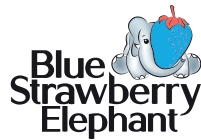
A red pennant-shaped graphic with the text 'veloviewer' in white lowercase letters on the left, a large white '94' in the center, and '1950-2024 TH' in white vertical text on the right. Below the pennant, the words 'MONSAL HILL CLIMB' are written in bold black uppercase letters.

veloviewer 94 1950-2024 TH
MONSAL HILL CLIMB

veloviewer



Race manual design by:



Follow us on socials



@monsalhillclimb
#monsalhillclimb.com

www.monsalhillclimb.com